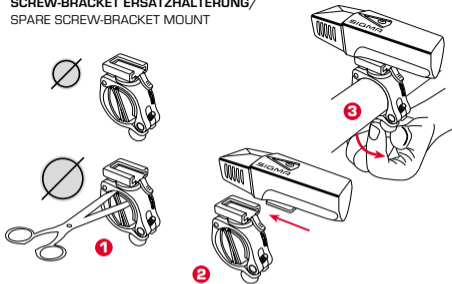
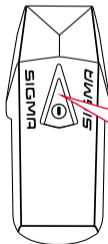
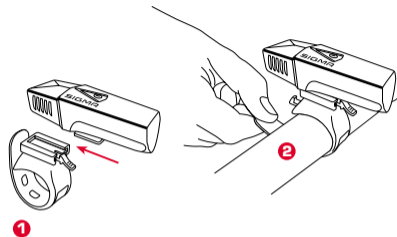


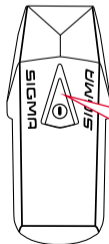
SCREW-BRACKET ERSATZHALTERUNG/
SPARE SCREW-BRACKET MOUNT



SILIKON-ERSATZHALTERUNG (OPTIONAL)/
SILICONE BRACKET (OPTIONAL)



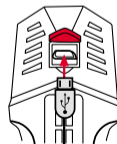
- 2 x click = on / power
- + 1 x click = standard
- + 1 x click = eco
- + 1 x click = flashing
- + 1 x click = fast-flashing
- + 1 x click = SOS flashing
- + 1 x click 5 sec. = off



Battery status

- > 71%
- 70-31%
- < 30%

Ladevorgang
Charging
Charge



Micro
USB
Micro USB cable incl.

(charger
not incl.)

Achten Sie bitte darauf, dass die rotmarkierte Abdichtung stets korrekt verschlossen ist. / Please always keep the silicone plug closed after charging.

Art.-Nr. 17530



HELMHALTERUNGS-SET
HELMET BRACKET SET

Art.-Nr. 20501



USB-LADEGERÄT
USB CHARGER

Art.-Nr. 00460



SCREW-BRACKET ERSATZHALTERUNG
SPARE SCREW-BRACKET MOUNT

Art.-Nr. 00145



SILIKON-ERSATZHALTERUNG
SILICONE BRACKET



USB CHARGING



BUSTER 600

SIGMA-ELEKTRO GmbH

Dr. -Julius-Leber- Straße 15
D-67433 Neustadt / Weinstraße

SIGMA SPORT USA

3487 Swenson Ave.
St. Charles, IL 60174, U.S.A.

SIGMA SPORT ASIA

4F, No.192, Zhonggong 2nd Rd.,
Xitun Dist., Taichung City 407, Taiwan

